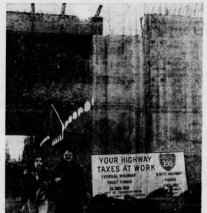


# Judge May Ease the Path of I-95 Through Queen Village

By GERALD BARNETT  
 PHILADELPHIA (UPI)—The U.S. District Court judge who has ordered the city to allow the Interstate 95 highway to be built through the Queen Village neighborhood in Philadelphia may ease the path of the highway through the area, according to a report by the Philadelphia Inquirer.

The report says that Judge Robert Taylor has ordered the city to allow the highway to be built through the Queen Village neighborhood in Philadelphia. The highway is to be built through the area between the city and the Delaware River.

The highway is to be built through the area between the city and the Delaware River. The highway is to be built through the area between the city and the Delaware River.



Work on I-95 is now at Fairmount ave. despite opposition in Queen Village.

PHILADELPHIA (UPI)—The U.S. District Court judge who has ordered the city to allow the Interstate 95 highway to be built through the Queen Village neighborhood in Philadelphia may ease the path of the highway through the area, according to a report by the Philadelphia Inquirer.

The report says that Judge Robert Taylor has ordered the city to allow the highway to be built through the Queen Village neighborhood in Philadelphia. The highway is to be built through the area between the city and the Delaware River.

The highway is to be built through the area between the city and the Delaware River. The highway is to be built through the area between the city and the Delaware River.

## Delays in Court

The judge ordered the city to allow the highway to be built through the Queen Village neighborhood in Philadelphia. The highway is to be built through the area between the city and the Delaware River.

The highway is to be built through the area between the city and the Delaware River. The highway is to be built through the area between the city and the Delaware River.

## Put a little love away.

For the things she'll need someday.

Tomorrow's dreams can come true. If you plan for them today. Saving is part of that plan. Start slow and steady. Put aside something from every paycheck. Every little bit helps your balance grow. And the bigger the balance, the better off you'll be.

And PSFS helps even more. Because PSFS pays more than ordinary banks. Every regular savings account at PSFS pays 5 1/2% interest a year (exclusive of state and local taxes). And your money earns interest every day it's in the bank. There's no waiting period, no special time of the month when you can't withdraw it.

You want it, it's yours. Don't wait it off. Put a little love away. At PSFS, The Saver's Bank, today.



**PSFS**  
 THE SAVER'S BANK

pays more than ordinary banks

The Philadelphia Saving Fund Society

## Impassioned Clash

The judge ordered the city to allow the highway to be built through the Queen Village neighborhood in Philadelphia. The highway is to be built through the area between the city and the Delaware River.

The highway is to be built through the area between the city and the Delaware River. The highway is to be built through the area between the city and the Delaware River.

## Turkey Plans

The judge ordered the city to allow the highway to be built through the Queen Village neighborhood in Philadelphia. The highway is to be built through the area between the city and the Delaware River.

The highway is to be built through the area between the city and the Delaware River. The highway is to be built through the area between the city and the Delaware River.

Clipped By:



info7814  
 Thu, Feb 27, 2020